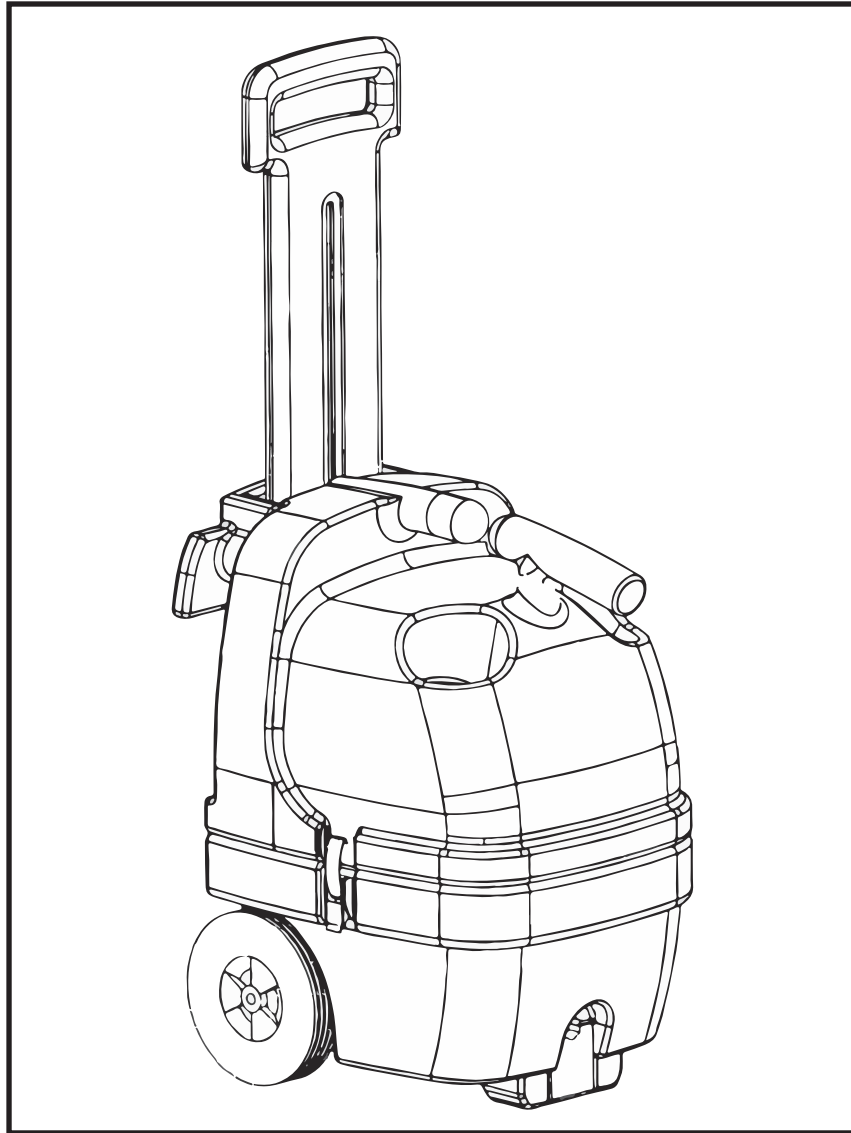


BRAVO

MODELS:
300MH
300MH-HT

PROFESSIONAL 3 GALLON SPOTTER OWNER'S/OPERATOR'S MANUAL



EDIC

WWW.EDIC-USA.COM

Revised 12-7-16



For commercial use only

TABLE OF CONTENTS

RECEIVING YOUR EQUIPMENT.....	3
WARNINGS AND SAFETY.....	3, 4
ELECTRICAL INFORMATION.....	4
ELECTRICAL AND GROUNDING INSTRUCTIONS.....	4
CORD STORAGE AND SAFETY.....	5
MAINTENANCE.....	5
300MH / 300MH-HT MACHINE OVERVIEW.....	6
300MH / 300MH-HT CONTROL PANEL.....	7
WET EXTRACTION PREP TIPS.....	7
USING A 300MH-HT / 300MH.....	8
TROUBLESHOOTING.....	9
300MH-HT BREAKDOWN.....	10-11
300MH BREAKDOWN.....	12-13
NOTES.....	14

RECEIVING YOUR NEW BRAVO:

When your package is delivered, check the carton carefully for signs of rough handling. If your BRAVO is damaged, notify the carrier immediately and request an inspection. Be sure to keep the carton, packing inserts, packing lists and carrier's receipt until the inspector has verified your claim.

EDIC's liability ceases when the carrier picks up the shipment. However, our customer service staff will be happy to furnish any information needed in connection with the claim and will attempt to expedite a resolution.



PLEASE READ BEFORE OPERATING YOUR NEW 300MH / 300MH-HT:

Read the manual carefully and completely before attempting to operate the unit. This manual has important information for the use and safe operation of the machine. Keep this manual handy at all times.

This equipment has been engineered and manufactured to provide excellent performance and service. To ensure that your equipment will continue to perform as intended:

- Maintain equipment regularly- following the suggested maintenance schedule provided.
- Use only original EDIC parts when servicing.
- Operate equipment with care.

If additional information is needed, please contact:

EDIC
800-338-3342

All information and specifications printed in this manual are current at the time of printing; however because of EDIC's policy of continual product development, we reserve the right to make changes at any time without notice.

FAILURE TO COMPLY WITH THE FOLLOWING WARNINGS AND INSTRUCTIONS WILL VOID THE WARRANTY.

WARNING!

- The machine was designed for use on upholstery and carpet cleaning applications as per instructions and recommendations written in this manual. Any deviation from its proper use or purpose and the consequential damage that may occur is the sole responsibility of the end user.
- Disconnect the power cord from the outlet before servicing. Do not leave machine connected to an electrical outlet when unattended.
- Do not immerse or use this machine in standing water. Such use may cause electric shock.
- When using an extension cord, use only a 3-prong conductor grounding cord-14 gauge wire or heavier.
- To avoid electric shock, do not expose the unit to rain or snow. Store it indoors in a heated location only.
- Do not use the machine for dry vacuuming.
- Use defoamer at all times to prevent damage to the vacuum motor.
- Do not use water in excess of 150°F (65.5°C) in the solution tank
- To prevent seal damage and chemical build-up to the pump system, run clean water through the solution lines after each day's use.
- Use only commercially available carpet cleaning solutions and defoamer intended for use with machines of this type. Do not use dyes, bleaches, ammonia, or other additives.
- This equipment is not designed to handle or use combustible/volatile substances such as gasoline or kerosene, in, on, or near the machine. The use of such materials will cause extreme hazardous condition.
- Do not expose machine to freezing temperatures.
- All repairs must be done by a EDIC authorized repair station.
- Do not use replacement parts other than original EDIC parts.
- Check that all spray nozzles are securely fastened. Loose nozzles could be ejected from equipment at high speeds.

- This is not a toy. Keep away from children.
- Do not pull by the power or use power cord as a handle. Always unplug by grabbing the plug and pulling, do not unplug by pulling the power cord.
- Inspect cord for damage. Do not use damaged cords. Connect only to properly grounded outlets.
- Keep hair, fingers, loose clothing, and body parts away from moving parts and openings.
- Turn off all controls before disconnecting machine
- Use caution with ejected liquid or chemicals. High pressures and temperatures could be hazardous to nearby people or surroundings.
- Do not run the heater dry. always make sure you have water
- Prevent burns by wearing gloves or using a barrier to remove hot quick disconnects.
- Never leave heater or equipment unattended when connected or powered on.
- Use only chemicals safe for extractors. Adhere to the appropriate mix ratios for all chemical.
- Powdered chemical is not recommended. The use of powdered chemical, if not diluted properly, may result in damage to the pump. If powdered chemicals are used, premix in a separate container before placing in the solution tank. Ensure powder is 100% dissolved.
- Always read and understand your chemical's MSDS (Material Safety Data Sheet) before use.



ELECTRICAL - 115 Volt
Model: 300MH / 300MH-HT

This machine is designed to operate on a standard 15 amp, 120 volt, 60 Hz, AC circuit. Voltages below 105 volt AC or above 125 volts AC could cause serious damage to the motor.

GROUNDING INSTRUCTIONS FOR 115VOLT:

This piece of equipment must be grounded. Should an electrical malfunction occur, grounding provides a path of least resistance for electrical current- reducing the risk of electric shock. This piece of equipment is furnished with a cord that has a grounding conductor and grounding plug. The grounded plug must only be plugged into an appropriate outlet that is properly installed and grounded in accordance with all local codes and ordinances.

WARNING:

Connecting the equipment to an improperly grounded outlet can result in an increased risk of electric shock. A qualified electrician should be consulted if you are unsure that the outlet is properly grounded. Do not modify the plug provided with the equipment. If it will not fit the outlet, have a proper outlet installed by a qualified electrician.

This appliance is designed for use on a 120-volt circuit. The grounding plug provided looks like the plug illustrated in Figure 1. Replace the power cord if the grounding pin is damaged or broken.

Extension cords connected to this machine should be 14 gauge, three-wire cords with three-prong plugs and outlets. DO NOT use extension cords more than 25 feet (7.6 m) long.

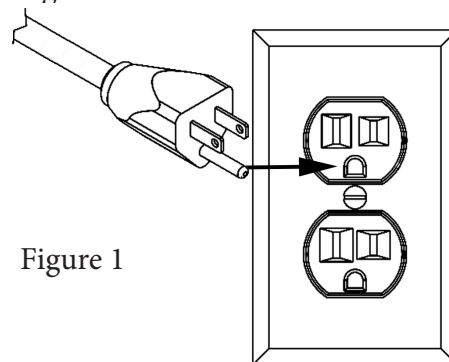


Figure 1

CORD STORAGE:

While not in use, storage can be accomplished by winding cord around handle assy. Cord should be completely unwound during operation.

CORD SAFETY

- Do not leave appliance when plugged in. Unplug from outlet when not in use and before servicing
- Inspect cord for damage after every job. Do not use with damaged cord or plug. If appliance is not working as it should, has been dropped, damaged, left outdoors, or dropped into water, return to service center for inspection and repair.
- Do not pull or carry by cord, use cord as handle, close a door on cord, or pull cord around sharp edges or corners. Do not run over cord. Keep cord away from heated surfaces.
- Do not unplug by pulling cord. To unplug, grasp the plug, not the cord.
- Do not handle plug or appliance with wet hands.
- This equipment should be stored indoors and not exposed to rain.

MAINTENANCE:

CAUTION: Disconnect the power cord from the outlet before doing any clean up or maintenance on the machine

The 300MH / 300MH-HT has been engineered and built to require minimum maintenance. But like any machine, it does require basic care to keep it in optimum working condition. Careful attention to these maintenance instructions will give you maximum operating performance and life expectancy of the machine.

1. Keep the machine clean. Do not allow dust to accumulate on external surfaces or near any moving parts.
2. After every job, wipe down the surface of the machine with a clean, damp cloth.

Daily:

1. Always keep the machine clean inside and out.
2. Pour 2 gallons of clean hot water in the solution tank. Turn the pump on and flush the entire system through the wand nozzles for about a minute to prevent alkaline build-up.
3. Remove dirt and lint build-up inside the filter screen in the recovery tank. Lint should be cleaned off so that air flow is not impeded.
4. Check the solution tank strainer in the solution tank. If lint has accumulated in the screen, remove and rinse it in clear running water.
5. Inspect cord for damage. Do not use machine with a damaged cord.

Weekly:

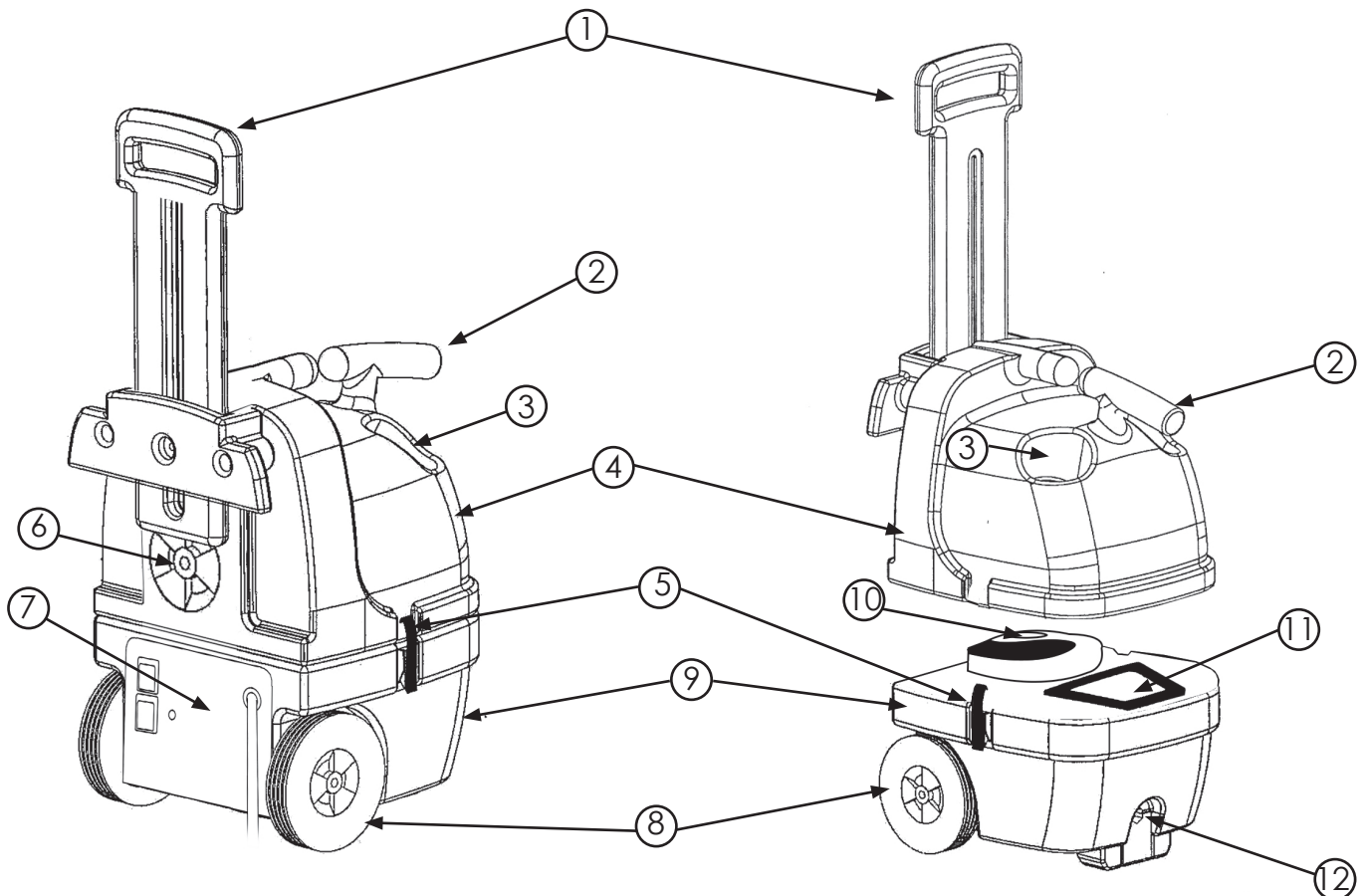
1. Check and clean solution filters.
2. Check for obstructions in vacuum pathway.
3. Spray quick connect couplers with a silicone lubricant to prevent sticking

Quarterly:

- Check pump, plumbing and fittings for leaks
- Check power cords and hoses for tears

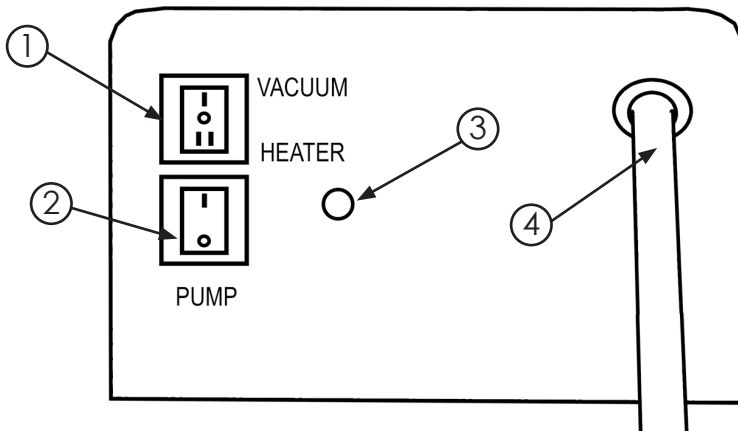
1. Handle- Used to maneuver and position the BRAVO. Can be adjusted to desired height.
2. Vacuum hose connection port. Also used to dump waste water by removing vacuum hose and tilting machine forward.
3. Two 32oz bottle holders. One on each side of Vacuum hose connection port.
4. Recovery tank. Holds waste water.
5. Body Latches. Secure the Solution tank to the recovery tank.
6. Recovery tank clean out port. Allows access to inside of recovery tank.
7. Switch plate. Contains power switches and power cord.
8. Non-marking wheels.
9. Solution tank. Holds clean water or solution.
10. Vacuum filter screen. Prevents solids from entering vacuum motor in case of accidental overfilling.
11. Solution tank fill port. Allows filling of solution tank. Has removable trapezoid filter.
12. Solution line Q.D.- Pressurized connection for solution line.

300MH / 300MH-HT OVERVIEW



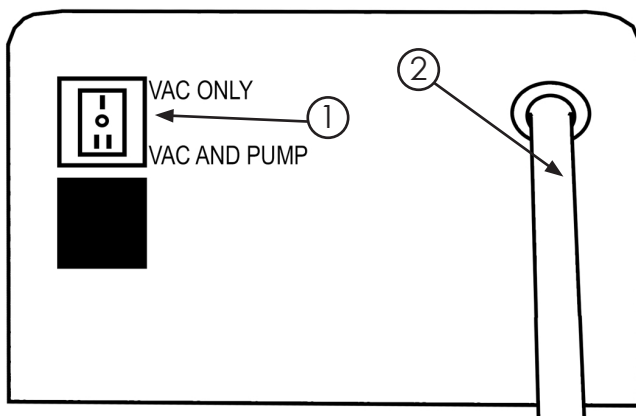
300MH-HT Control panel:

1. 3 position rocker switch. "I" position is vacuum only. "O" position is off. "II" position is Heater pre-heat.
2. 2 Position rocker switch. "I" Pump on. "O" Pump off.
3. Heater confirmation light. Turns on when heater is on.
4. Power cord.



300MH Control panel:

1. 3 position rocker switch. "I" position is vacuum only. "O" position is off. "II" position is vacuum and pump on. Both pump and vac will work at the same time.
2. Power cord.



CHECKING CARPETS AND TEXTILES FOR COLOURFASTNESS:

Cleaning upholstery or carpet with success requires a good knowledge of the type of fabric to be worked on. On upholstery fabrics, look for the cleaning instruction label sewn on the underside of the furniture for the recommended method of cleaning the fabric. If it calls for dry cleaning, do not attempt to clean with the wet extraction method. Otherwise, damage to the fabric could occur. Extraction works perfectly on most synthetic fabrics including synthetic velvets. For carpets consult the

Before proceeding, test the fabric for colourfastness. Apply a small amount of ready-to-use cleaning solution on the fabric in an inconspicuous spot. Wait for 2 to 3 minutes and rub the area with a white terry cloth towel. If no color comes off the towel, the fabric should be safe to clean. If a little color comes off, there is some risk of colors running when you clean. It may be possible to stabilise colors by cleaning with an acidic rinse.

PREPARING CARPETS AND TEXTILES FOR WET EXTRACTION:

Pre- vacuuming, using a dedicated dry vacuum, is recommended prior to wet extraction. Heavier solids like sand and dirt are easier to remove when dry vacuumed.

After vacuuming, pre-spray the surface to be cleaned. This step allows the chemical to dwell and penetrate dirt and stains.

Performing both steps before cleaning can improve final results.

USING A 300MH-HT:

1. Unfasten the two Body latches (#5 on page 6). Lift the recovery tank (#4 on page 6) from the solution tank (#9 on page 6).
2. Use the solution tank fill port to fill your solution tank. Use enough water or solution to cover the float switch. Make sure Trapezoid filter is in place.
3. Secure the recovery tank to the solution tank using the two body latches.
4. Connect the power cord to a 115V outlet.
5. Pre-heat the water by placing the 3 position rocker switch (#1 on page 7) into the "II" position.
6. The heater confirmation light (#3 on page 7) will turn off once the water has reached the appropriate temperature. This process can take 5-10 minutes depending on the water temperature placed in the solution tank. Use warm or hot water (under 150 degrees) to speed up the pre-heat process. The heater and Vacuum motor cannot be used simultaneously.
7. Connect the vacuum hose to the vacuum hose connection port (#2 on page 6)
8. Connect the solution line to the solution line Q.D. (#12 on page 6)
9. Turn on the vacuum switch by placing the 3 position rocker switch (#1 on page 7) into the "I" position.
10. Turn on the pump by placing the 2 position rocker switch (#2 on page 7) into the "I" position. Slowly pull the wand or upholstery tool towards you with the solution valve engaged. Return over the same area with the solution valve disengaged (dry pass). Move your upholstery tool or carpet wand over to start your next pass. Overlap the previous pass to prevent streaking.
11. When you run out of water turn off all switches, unplug the machine, remove the vacuum hose from the vacuum hose connection port, and unfasten the two latches to release the recovery tank.
12. Take your recovery tank (#4 on page 6) to an approved drain. Hold the recovery tank upside down to dump from the Vacuum hose connection port. Rinse out the tank to prevent odor build up.
13. You may resume your job by repeating steps 2-10.

USING A 300MH:

1. Unfasten the two Body latches (#5 on page 6). Lift the recovery tank (#4 on page 6) from the solution tank (#9 on page 6).
2. Use the solution tank fill port to fill your solution tank. Make sure Trapezoid filter is in place.
3. Secure the recovery tank to the solution tank using the two body latches.
4. Connect the power cord to a 115V outlet.
5. Place the 3 position rocker switch (#1 on page 7) into the "II" position to turn on both pump and vacuum.
6. Connect vacuum hose to the vacuum hose connection port (#2 on page 6)
7. Connect solution line to solution line Q.D. (#12 on page 6)
8. Slowly pull the wand or upholstery tool towards you with the solution valve engaged. Return over the same area with the solution valve disengaged (dry pass). Move your upholstery tool or carpet wand over to start your next pass. Overlap the previous pass to prevent streaking.
9. When you run out of water turn off all switches, unplug the machine, remove the vacuum hose from the vacuum hose connection port, and unfasten the two latches to release the recovery tank.
10. Take your recovery tank (#4 on page 6) to an approved drain. Hold the recovery tank upside down to dump from the Vacuum hose connection port. Rinse out the tank to prevent odor build up.
11. You may resume your job by repeating steps 2-9.

NOTE: Always use de-foamer. Previously shampooed carpets may have a heavy build-up of old shampoo residue. This buildup can cause excess foam which the vacuum can ingest and result in damage to the vacuum motor.

TROUBLESHOOTING

ELECTRICAL SYSTEM

PROBLEM	SOLUTION
NO ELECTRICAL POWER	<ol style="list-style-type: none"> 1. Defective power cord. 2. House or building circuit breaker tripped
POWER IS INTERMITTENT TO ONE OR ALL MOTORS	<ol style="list-style-type: none"> 1. Faulty electrical cable. 2. Defective switches. 3. Loose terminal or discolored terminal connections.

VACUUM SYSTEM

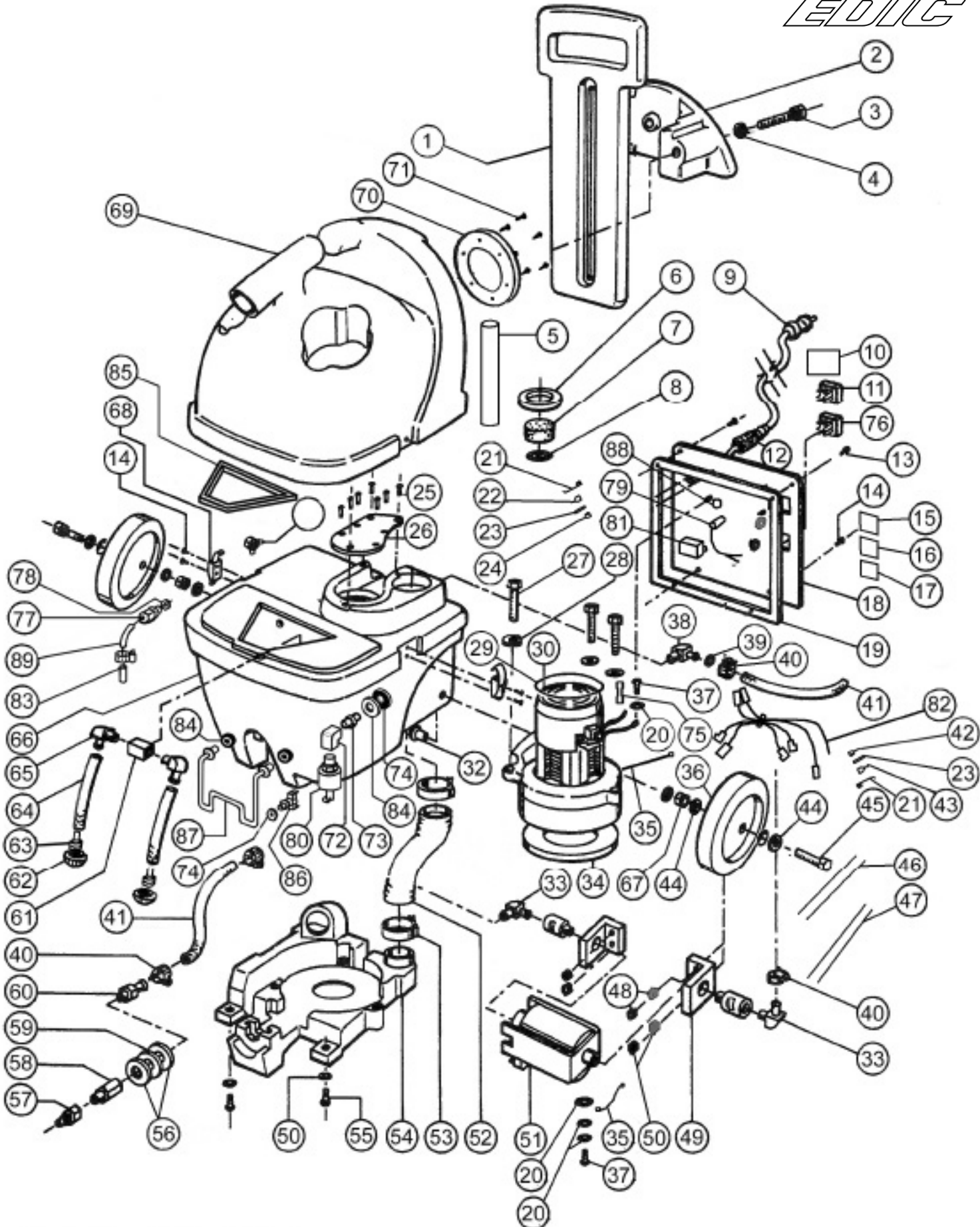
PROBLEM	SOLUTION
NO VACUUM SUCTION	<ol style="list-style-type: none"> 1. Recovery tank not lined up and secured to solution tank. 2. Loose vacuum hose, vacuum connection 3. Loose wire to vacuum motor.
LOW VACUUM SUCTION	<ol style="list-style-type: none"> 1. Accumulated dirt on vacuum filter screen (#10 on page 6). 2. Worn out vacuum base gasket. 3. Lint & dirt build-up on wand head. 4. Defective vacuum hose. 5. Loose connection in the vacuum motor.

SOLUTION SYSTEM

PROBLEM	SOLUTION
PUMP MOTOR RUNS BUT NO SPRAY THROUGH SPRAY TIPS	<ol style="list-style-type: none"> 1. Clogged spray tips. 2. Clogged solution intake filter screens. 3. Clogged female quick disconnect coupler. 4. Quick disconnects not fully connected 5. Dirty or damaged pump valves. 6. Crack in pump housing.
UNEVEN OR WEAK SPRAY FOR SPRAY TIPS	<ol style="list-style-type: none"> 1. Clogged or dirty spray tips. 2. Accumulated dirt on solution intake filter screen. 3. Accumulation of debris inside pump and plumbing. 4. Defective rectifier or motor. 5. Worn spray tips.
HEATER NOT WORKING ON 300MH-HT	<ol style="list-style-type: none"> 1. Make sure solution tank is filled past the top of the ball float switch. 2. Make sure Ball float switch is moving freely and not obstructed. 3. If unit runs dry, the one time fuse will go off. Contact a service center to replace the fuse. 4. Defective thermostat. 5. Defective switch.

300MH-HT

EDIC



300MH-HT PARTS LIST

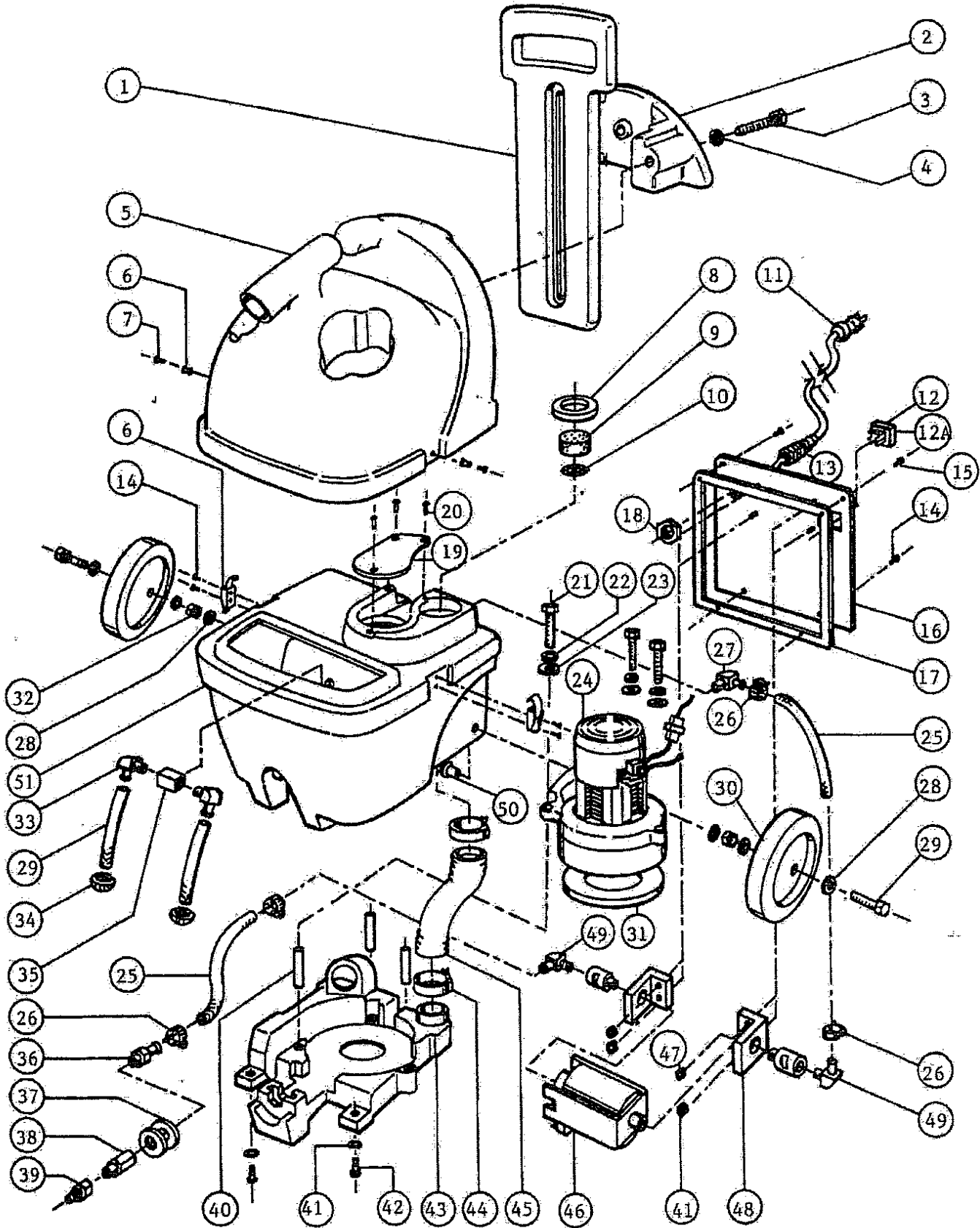


ITEM NO.	PART NUMBER	QTY.
1	F11800 handle	1
2	F11791 cordwrap	1
3	C00314-1 hex bolt 1/4"-20	2
4	C00251 5/16" split lock washer	2
5	K11146 1" PVC pipe	7 3/4"
6	E11044 gasket 2.25" OD	1
7	E11045 foam disc, 1.5" OD	1
8	D11043 filter screen	1
9	B10719 Power cord 16/3, 25'	1
10	H02548 label: english/spanish	1
11	B11751 rocker switch	1
12	B11199 strain relief	1
13	C11529	2
14	C00310-38	6
15	H03545	1
18	D11169 Switch plate	1
19	E11722 gasket vent plate	1
20	C00256 #10 ext. star	6
21	B11873 18 GA. Wire Black 3.5"	2
22	B11874 18 GA. Wire Black 7"	1
23	B11720 Flag Connector .250	2
24	B11872 terminal lug	1
25	C00293 screw #8x1/2" Pan/blk	5
26	F11711 vac duct	1
27	C12920 Screw, #8 x 2 1/2"	3
28	C00238 washer .275", neosteel	3
29	E11129 Base gasket	12"
30	G00520-1L vacuum 106" WL	1
31	J00656 Hose clamp 1 1/2"	1
32	C11724 3/8-16 weld nut	2
33	A00134 90 elbow, 1/8MPx 1/4B	2
34	E11169 Vac motor gasket	1
35	00185-21A + B00177 ground wire	2
36	G11688 6" wheel	2
37	C00284 Ground screw 10/32 x 3/8"	2
38	A00134 90 elbow, 1/8MPx 1/4B	1
40	J00651 screw clamp, 1/4"-5/8"	4
41	J11154-1 12" solution hose	2
42	B00180-10-3 ring terminal	2
43	B10980 Flag conn. .250x.032	6
44	C11540 Washer 3/8ID x 7/8OD x 3/32 thick	8
45	C13121 Bolt 3/8-16 x 2 3/4	2
46	B00190 Zip tie 4"	5

ITEM NO.	PART NUMBER	QTY.
47	B00191 Zip Tie 11"	1
48	C00278 locknut 10-32 Nylon, SS	4
49	E11691 Pump Bracket	2
50	C11955 washer 3/16" ID, .490 OD, .60 thick, aluminum	6
51	G11689 Oscillating pump	1
52	J00618-1 wire reinforced vac hose 1.5"	12"
53	J00650 Hose clamp, #24, 1 1/4"	1
54	F11803 Motor Base	1
55	C90007-1 screw 10/32 x 1"	2
56	C00232 Washer 1/2" Flat	2
57	A00104 Quick Disconnect	1
58	A00121 1/4MP X 1/4FP Brass	1
59	C11244 Washer 1/2" smooth	1
60	A00139 1/4" MP x 1/4" barb	1
61	A00152 Tee 1/8MP x 1/8FP x 1/8FP	1
62	D11684 Inlet filter	2
63	A00136 1/4" barb x1/8" mp nylon	2
64	J00596 Solution Hose, 1/4" braided SPECIFY 4 3/4" each	2
65	A00130 90 elbow 1/8MP x 1/8FP	2
66	F11802 solution tank	1
67	C11702 hex nut 3/8, 16	2
68	D12020 black latch	2
69	F11801-STCB Recovery tank	1
70	F11723 Clean out port	1
71	C02237 Screw for clean out port	6
72	A00168-18 bushing 1/4M x 1/8F	1
73	A00055 nipple 1/8" brass	1
74	A00124 Brass Hex Nut, 1/4" NPT	2
75	B00181 Wire Splice, Blue, 1 wire	4
76	B02211-1 green rocker switch	1
77	B02212 Strain relief	1
78	B02214 Strain relief nut	1
79	B11756 Green indicator light	1
80	B11985 Float switch	1
81	B11986 Relay	1
82	B12016 main harness	1
83	B12085 thermal fuse	1
84	E12022 Rubber washer	3
85	F90008 filter with frame	1
86	G11272 150 deg thermostat	1
87	G12055 heat element	1
88	H10911 Grounding mark	1
89	J12097 1/4" poly tubing	0.5 FT

300MH

EDIC



300MH PARTS LIST



ITEM NO.	PART NUMBER	QTY.
1	F11800 Handle	1
2	F11791 CORDWRAP	1
3	C00314-1 HEX BOLT, 1/4-20 X 1	2
4	C00233 WASHER, 1/4" FLAT	2
5	F00801 RECOVERY TANK	1
6	D12020 Latch	2
8	E11044 GASKET, 2.25 OD	1
9	E11045 FOAM DISC, 1.5 OD 1/2" THICK	1
10	D11043 FILTER SCREEN	1
11	B10719 POWER CORD 16/3, 20', BLACK	1
12	B11751 ROCKER SWITCH, BLACK	1
12A	B00214-2 COVER, SWITCH	1
13	B11199 STRAIN RELIEF	1
14	C00310-38 SCREW, 8-32 X 3/8"	6
15	C11529 SCREW, 10-32 X 3/8"	2
16	D11699 SWITCH PLATE	1
17	E11722 GASKET, VENT PLATE	1
18	B02214 STRAIN RELIEF NUT	1
19	F11711 VAC DUCT	1
20	C00293 SCREW, #8 X 1/2" PAN BLACK	5
21	C12920 10-32 x 2 1/2	3
22	C00254 1/4" LOCKWASHER	3
23	C00238 WASHER 1/4" FLAT	3
24	G00520-1L VACUUM MOTOR, 106", 5.7" REVERSE	1
25	J11154-1 SOLUTION HOSE, 1/4" WIRE	3 FT
26	J00651 SCREW CLAMP, 1/4-5/8" 4	4
27	A00134 90 DEGREE ELBOW, 1/8" MP X 1/4" B	1

ITEM NO.	PART NUMBER	QTY.
28	C11540 3/8ID x 7/8OD	8
29	C13121 Bolt 3/8-16 x 2-3/4	2
30	G11688 WHEEL, 6"	2
31	E11169 VAC Motor gasket	1
32	C11702 HEX NUT, 3/8 16	2
33	A00130 90 DEGREE ELBOW, 1/8 MP X 1/4 B	2
34	D11684 INLET FILTER	2
35	A00152 TEE, 1/8 MP X 1/8 FP X 1/8 FP	1
36	A00139 1/4 MP X 1/4 BARB, BRASS	1
37	C00232 WASHER, 1/2" FLAT	3
38	A00121 1/4 MP X 1/4 FP BRASS	1
39	A00104 QUICK DISCONNECT, 1/4" MALE	1
40	K11073 SPACER, 1/4-20 X 1/2 OD X 1 3/4 LONG	3
41	C11955 Flat #10 washer	6
42	C90007-1 SCREW, 10-32 X 1" PHIL TRUSS HEAD, SS	2
43	F11803 MOTOR BASE	1
44	J00656 HOSE CLAMP, 1 1/2"	2
45	J00618-1 VACUUM HOSE, 1 1/2", WIRE REINFORCED	10"
46	G11689 PUMP, OSCILLATING	1
47	C00278 NYLON LOCKNUT, 10-32	1
48	E11691 PUMP BRACKET	2
49	A00134 90 DEGREE ELBOW, 1/8 MP X 1/4 B	2
50	C11724 3/8-16, WELD NUT	2
51	F11802 SOLUTION TANK	1
52	F11723 CLEAN OUT PORT	1
53	C02237 SCREW, PHILLIPS (CLEAN OUT PORT)	6

*52 & 53 not shown

NOTES
